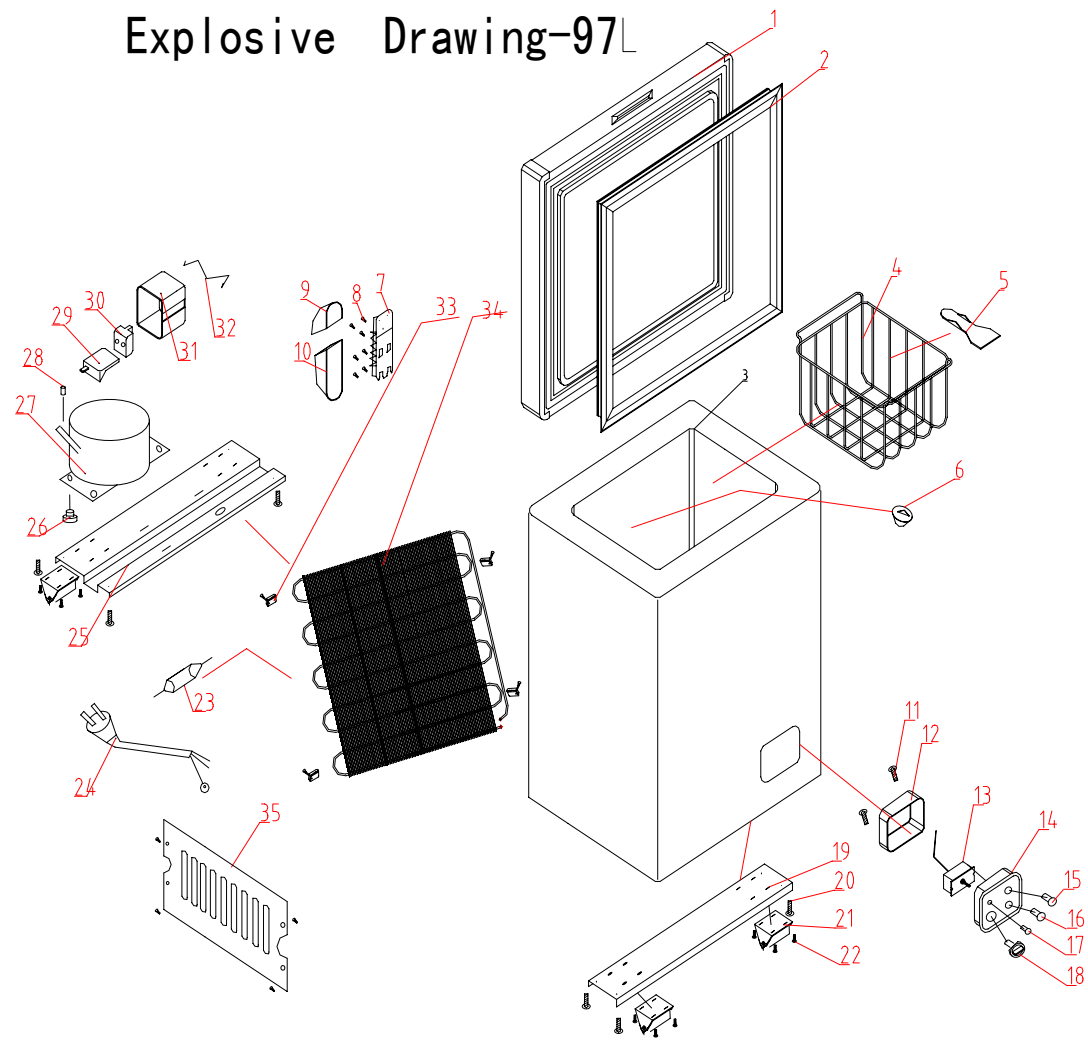


# WD-97卧式冷柜爆炸图

## Explosive Drawing-97L



## W D-9 7 冷柜

| 代号 | 图号         | 名称    | 英文名称                | 数量 | 单价价格(美元) |
|----|------------|-------|---------------------|----|----------|
| 1  | B202.2     | 门部件   | Door                | 1  | 11       |
| 2  | B202.2-4   | 门封条   | gasket              | 1  | 2.5      |
| 3  | B202.3.1   | 箱体部件  | Cabinet             | 1  | 31.3     |
| 4  | B202.-5    | 吊篮    | Rack                | 1  | 4.5      |
| 5  | B101.7-10  | 冰铲    | Ice Shovel          | 1  | 0.2      |
| 6  | B205.7.4-4 | 内出水管盖 | Inner Cover         | 1  | 0.1      |
| 7  | B205.4     | 铰链部件  | Hinge               | 2  | 1.2      |
| 8  |            | 螺钉    | Screw               | 14 |          |
| 9  | B205.4-1   | 铰链上罩  | Upper Hinge Cover   | 2  | 0.1      |
| 10 | B205.4-9   | 铰链下罩  | Down Hinge Cover    | 2  | 0.2      |
| 11 |            | 螺钉    | Screw               | 2  |          |
| 12 | B205.1-6   | 温控器盒  | THERMOSTAT COVER    | 1  | 0.5      |
| 13 | B205.1-2   | 温控器   | THERMOSTAT          | 1  | 2.2      |
| 14 | B205.1-1   | 控制面板  | Control Board       | 1  | 0.6      |
| 15 | B205.1-4   | 急冷开关  | Fast Freezer Switch | 1  | 1.1      |
| 16 | B205.1-3   | 运行指示灯 | Opertion Light      | 1  | 0.6      |
| 17 | B205.1-3   | 电源指示灯 | Power Light         | 1  | 0.6      |
| 18 | B101.0-1   | 温控旋钮  | Thermostat Knob     | 1  | 0.1      |
| 19 | B202-3     | 前底板   | Front Cabinet Base  | 1  | 1.5      |
| 20 |            | 自攻螺钉  | Self Topping Screw  | 8  |          |
| 21 | B205.3     | 脚轮    | Leg                 | 4  | 0.8      |
| 22 |            | 自攻螺钉  | Self Topping Screw  | 16 |          |
| 23 | B101.7     | 干燥器   | Drier               | 1  | 0.4      |

|    |               |       |                   |   |      |
|----|---------------|-------|-------------------|---|------|
| 24 |               | 电源线   | Power Supply Cord | 1 | 3.3  |
| 25 | B202-4        | 压缩机底板 | Compressor Base   | 1 | 2.7  |
| 26 |               | 压缩机胶脚 | Grommet           | 4 | 42.3 |
| 27 |               | 压缩机部件 | Compressor        | 1 |      |
| 28 |               | 螺钉    | Screw             | 4 |      |
| 29 |               | 过载    | Overload Protec   | 1 |      |
| 30 |               | PTC   | PTC Starter       | 1 |      |
| 31 |               | 线盒    | Relay Cover       | 1 |      |
| 32 |               | 线卡    | Relay Band        | 1 |      |
| 33 | B205-10       | 冷凝器夹  | Nip               | 4 | 0.1  |
| 34 | B202. 3. 1-1B | 冷凝器   | Condenser         | 1 | 3.1  |
| 35 | B202-2        | 百叶窗   | Shutter           | 1 | 1.3  |