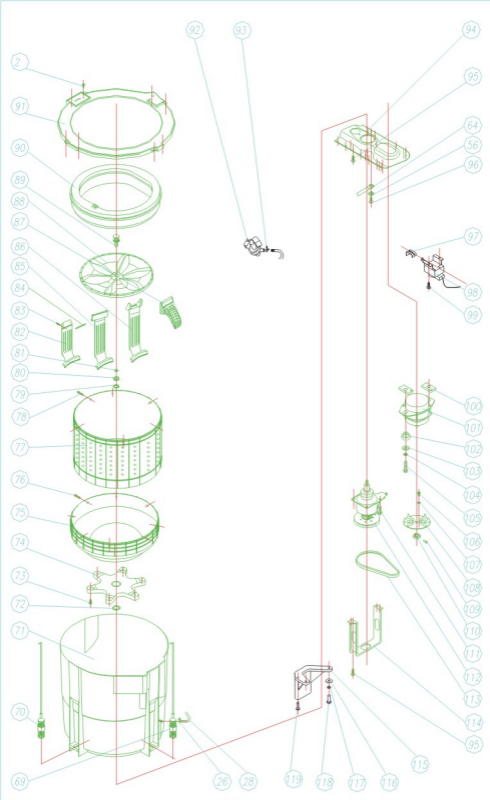


XQB526F Exploding Drawing(1)



XQB526F Exploding Drawing(3)

## Parts list for W798SS-1

No.	Code	E-Name	Qty. per unit
1	XQB552.6.1	Cabinet	1
2	GB9074.18	Screw Assembly ST4.2X16	23
3	XQB552-1	name label	1
4	GB9074.18-88	tapping screw assembly ST4.2X19	8
5	XQB550.1.1-5	microcomputer controlled board assembly	1
6	XQB550.1.1-1	front control panel	1
7	XQB317-1	cover for long screw of top cover	2
8	XQB550.1.1-2	front inlay line	1
9	XQB550.1.1-3	perspective window	1
10	XQB5526F.1.1-4	decorative film	1
11	XQB550.1-3	right inlay line	1
12	XQB5526F.1.3-2	perspective lid	1
13	XQB5526F.1.3-5	Q526F label of operating instruction	1
14	XQB5526F.1.3-3	Q526F lid	1
15	XQB36-16	warning label	1
16	XQB317.1-2a	spring of lid	1
17	XQB550.1-2	left inlay line	1
18	XQB433.14.1	water inlet hose assembly	1
19		Sealing Ring	1
20	XQB5526F.1.2-2	Q52 6F back control panel	1
21	XQB4328.1.5	Water Inlet Valve	1
22	XQB550.1.6	Safety Switch	1
23	XQB760.1.1.1	power switch with auto cut-off mode	1
24	GB9074.18-88	tapping screw assembly ST4.2X9.5	11
25	XQB550.1-4	water inlet corrugated hose	1
26	XQB317.3-1	spring clamp of air hose	2
27	XQB550.1-5	water level switch	1
28		small air hose	1
29	XQB550.1.4-1/2	water inlet box assembly	1
30			
31	XQB550-5	label for box of powdered laundry detergent	1

## W798SS-1 Parts List

	Code	E-Name	Qty. per unit
32	XQB550-4	box of powdered laundry detergent	1
33	XQB550.1-1	Top Cover	1
34	XQB31-25	Back Plate	1
35	XQB760.4-1	cover of drain hole	1
36	XQB550.6-1	Base	1
37	GB9074.18-88	tapping screw assembly ST 3.9×13	11
38	XQB31-10	spring clamp of drain hose	1
39	XQB31.14.2	drain hose assembly	1
40	XQB317.9-8	fixed foot mat	4
41	XQB317.9-9	fixed foot core	4
42	XQB31.9.3	Lock Knob	1
43	XQB31.9-15	plastic spacer for adjustable foot	1
44	XQB317.9-5	washer for moveable foot	1
45	XQB550.6-3	Mat Plate	1
46	XQB317.9-7	adjustable spring	1
47	XQB31.9-9a	rubber wrap of cabinet foot	1
48	XQB550.6-2	cabinet adjustable foot	1
49	XQB550-3	Base Plate	1

## W798SS-1 Parts List

	Code	E-Name	Qty. per unit
50	XQB526.8-1	protective block	3
51	XQB317.9-10	Handle	2
52	XQB31.9.2	Capacitor	1
53	XQB317.9.2	holder of capacitor	1
54	XQB436.17	inductive coil	1
55	GB9074.1	Screw Assembly M4X16	2
56	GB93-87	Washer 4	5
57	XQB317-8	terminal box	1
58	GB818-85	Screw M4X12	2
59	XQB317.9-13	power supply cord	1
60	XQB317.9-14a	spacer of power cord	1
61	XQB317.9-18	protective sleeve for power cord	1
62	GB9074.18	Nut M4	2
63	XQB317.9-17	grounding wire for connection	1
64	XQB31.10a	grounding wire	1
65	GB6170-86	Nut M4	2
66	XQB317-7	small protective wrap for terminal	8
67	XQB317-9	Special Screw	1
68	XQB31-30a	plastic bag for protective wrap	1
69	XQB550.8	back suspension spring assembly	2

## W798SS-1 Parts List

	Code	E-Name	Qty. per unit
70	XQB550.7	front suspension spring assembly	2
71	XQB550.2-1	Outer Tub	1
72	XQB760.2-7	washer of inner tub	1
73	GB9074.22	screw assembly ST4.8X25	6
74	XQB4298.4-9	Tray	1
75	XQB550.3-2	bottom of inner tub	1
76	XQB550.3-9	set screw of inner tub body	8
77	XQB550.3-1	inner tub body	1
78	GB9074.18-88	tapping screw assembly ST4.8X19-C-H	8
79	XQB31-7a	press ring of inner tub	1
80	XQB760.2-8	nut of inner tub	1
81	XQB760.2-5	washer of impeller	1
82	XQB550.3-4	short waterfall channel	1
83	GB9074.18-88	tapping screw assembly ST4.2X9.5	2
84	XQB550.3-11	washboard	1
85	XQB550.3-3	waterfall channel	2
86	XQB550.3-5	jet-flow channel	1
87	XQB550.3.1	lint filter rack	1
88	XQB550.4	Impeller Assembly	1
89	XQB4298.18	set screw assembly for impeller	1
90	XQB550.3.2	Balance Ring	1
91	XQB552.2-1	ring of outer tub	1
92	XQJ661.2.2	drain pump assembly	1
93	XQB37-37	spring clamp of drain pump	1
94	XQB550.2-3	Chassis	1

## W798SS-1 Parts List

	Code	E-Name	Qty. per unit
95	GB9074.22	tapping screw assembly ST6.3x25	12
96	GB818-85	screw M4X8	1
97	XQJ661.2-1	connector	1
98	XQJ661.2.4	drain motor assembly	1
99	GB9074.22	tapping screw assembly ST6.3x25	2
100	XQB31-27(28)	mat for motor	2
101	XQB760.2.5-1	Motor	1
102	XQB31-18b	insulation mat for motor	2
103	GB96-85	Washer 8	2
104	GB93-87	Washer 8	2
105	GB5782-86	Bolt M8X25	2
106	GB823-76	Bolt M5X6	3
107	GB859-66	Washer 5	3
108	XQB31.11.2	Fan	1
109	XQB31.11-2a	Lock Screw	1
110	XQB52.2.1-1	Motor Pulley	1
111	GB5782-86	Screw M8X12	4
112	XQB4298.8	Clutch	1
113	XQB552.2-2	V-belt	1
114	XQB760.2-4	protective support for clutch	1
115	XQB526.3-2	balance block	1
116	GB96-85	washer 8	2
117	GB93-87	washer 8	2
118	GB5782-86	blot M8X25	2
119	GB9074.22	tapping screw assembly ST6.3x32	1