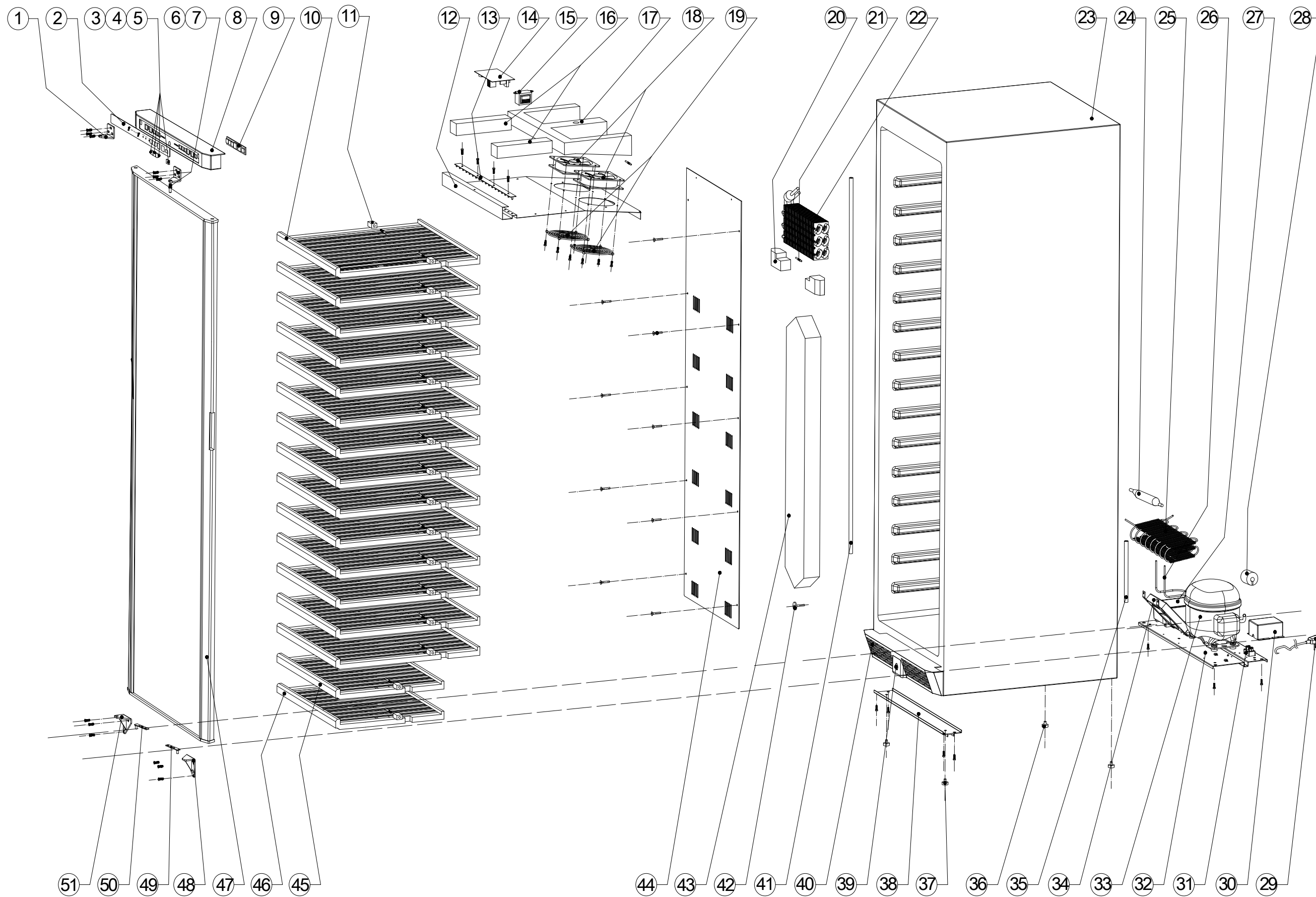


WC681BG Exploded View



WC681BG Parts List

No.	Part No.	Description	Q'ty
1	DG14-501	Left Upper Hinge	1
2	DG20-1006	Control Panel Film	1
3	DG13-501	Left Button	1
4	DG13-503	Middle Button	2
5	DG13-502	Right Button	1
6	DG14-503	Right Upper Hinge	1
7	DG14-502	Shaft	1
8	DG13-504	Top Insert	1
9	50EA-1LED.1	Display PCB	1
10	DG15-1001	Large Shelf	14
11	DG13-7	Plastic Post	32
12	DG22-507	Top Air Duct Cover	1
13	168A-1LED.1	LED Light Assembly	1
14	168A-1LED	Main Control PCB	1
15	DG6-1002	Transformer	1
16	DG18-1008	Top Air Duct Foam 3	2
17	DG18-504	Top Air Duct Foam	1
18	DG7-3	Evaporator Fan Motor	2
19	DG19-1	Fan Guard	2
20	DG18-501	Upper Air Duct Foam	2
21	DG8-501	Thermistor	2
22	DG12-501	Evaporator	1
23	681BG-1	Cabinet	1
24	DG11-4	Dryer Filter	1
25	DG12-1001	Condenser	1
26	DG12-7	Connecting Pipe	1
27	DG13-1	Water Drip Tray 2	1
28	DG13-24	Anti-vibrating Block	1
29	DG2-1	Power Supply Cord	1
30	DG13-2	Junction Box	1
31	DG11-2	Terminal	1
32	DG22-504	Compressor Base	1
33	DG1-1001	Compressor Assembly	1
34	DG7-2.1	Condenser Fan Motor	1
35	DG13-512	Drainage Pipe	1
36	DG13-507	Rear Leg	2
37	DG13-508	Front Leg	2
38	DG22-505	Reinforced Plate	1
39	DG14-506	Lock Assembly	1
40	DG13-509	Bottom Grille	1
41	DG12-503	Suction Pipe Assembly	1
42	DG13-510	Air Duct Supporter	1
43	DG18-506	Air Duct Foam	1
44	DG22-509	Rear Air Duct	1
45	DG15-1002	Bottom Shelf 1	1
46	DG15-1007	Bottom Shelf 2	1
47	DG23-501	Glass Door	1
48	DG14-1012	Right Lower Door Hinge Supporter	1
49	DG14-509	Right Lower Door Hinge	1
50	DG14-510	Left Lower Door Hinge	1
51	DG14-1013	Left Lower Door Hinge Supporter	1