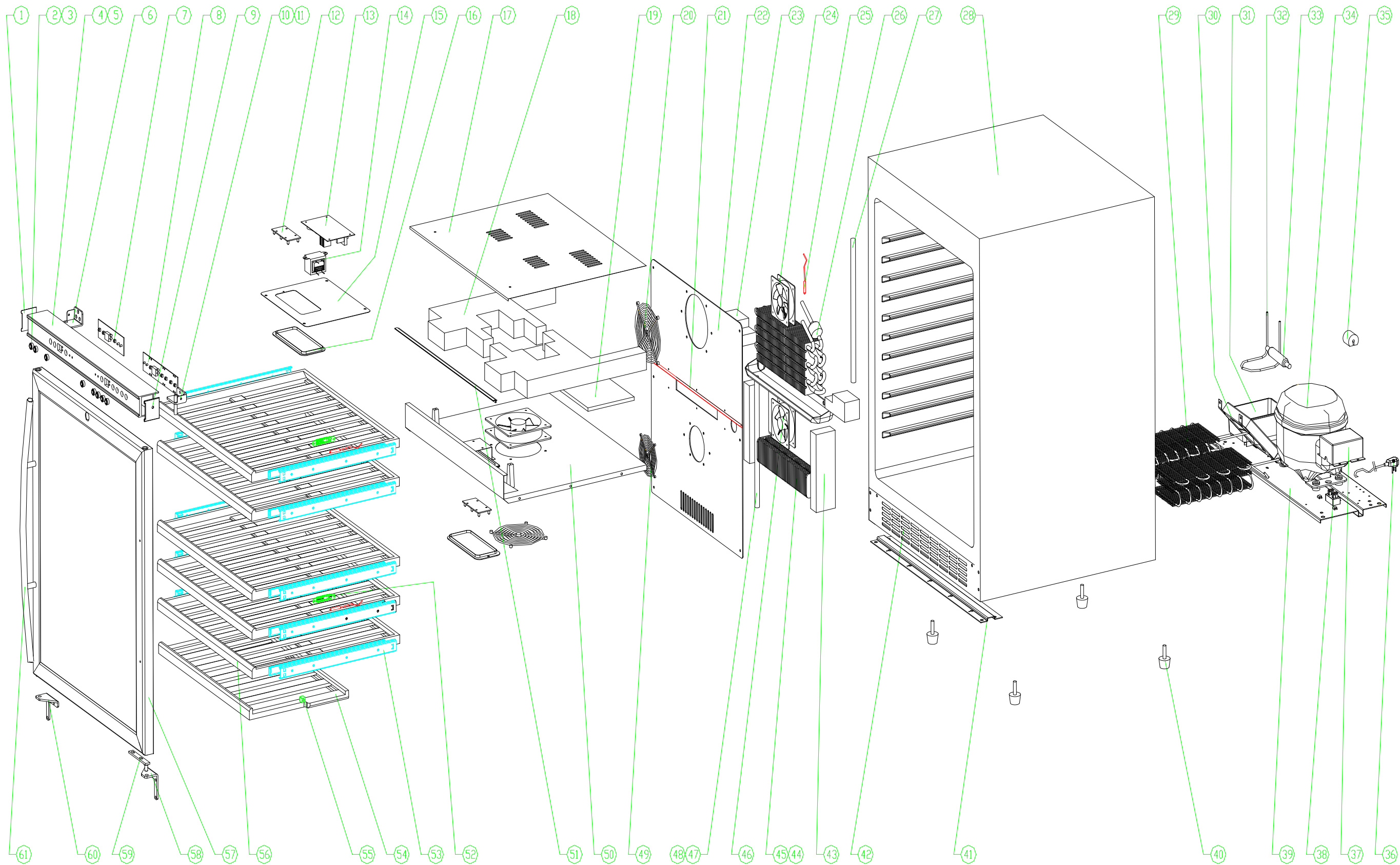


# WCR524SDZD Exploded View



### WCR524SDZD Parts List

No.	Part No.	Description	Q'ty
1	DG22-1058	Left Cover	1
2	DG22-1060	Button	8
3	DG22-1061	Button Ring	8
4	DG13-1013	Top Insert	1
5	DG20-1015	Film	1
6	DG22-1062	Left Upper Door Hinge	1
7	50EB-1.2L	Upper Zone Display PCB	1
8	50EB-1.2R	Lower Zone Display PCB	1
9	DG22-1059	Right Cover	1
10	DG22-1063	Right Upper Door Hinge	1
11	DG22-1064	Door Shaft	1
12	DG3-1001.1	LED Light	2
13	50EB-1.2	Control PCB	1
14	DG6-1002	Transformer	1
15	DG22-502	Top Cover	1
16	DG13-5	Light Cover	2
17	DG22-1073	Upper Plate for Middle Partition	1
18	DG18-1018	Foam of Middle Partition	2
19	DG18-1019	Foam of Middle Partition	1
20	DG19-1	Fan Guard	2
21	DG22-1017	Supporter of Middle Partition	1
22	DG22-1074	Rear Air Duct Cover	1
23	DG18-1007	Evaporator Foam	2
24	DG7-3	Evaporator Fan Motor	2
25	DG8-501	Thermistor	3
26	DG12-1003	Evaporator	1
27	DG12-1005	Suction Pipe Assembly	1
28	WCR524SDZD-1	Cabinet	1
29	DG12-15	Condenser	1
30	DG7-2.1	Condenser Fan Motor	1
31	DG13-1	Water Drip Tray	1
32	DG12-7	Connection Pipe	1
33	DG11-4	Dryer Filter	1
34	DG1-1002	Compressor	1
35	DG13-24	Anti-vibrating Block	1
36	DG2-1	Power Supply Cord	1
37	DG13-2	Junction Box	1
38	DG11-2	Terminal	1
39	DG22-1015	Compressor Base	1
40	DG13-508	Leg	4
41	DG22-1016	Reinforced Plate	1
42	DG22-1065	Bottom Grille	1
43	DG18-1002	Heater Foam	2
44	DG11-1.1	PTC Heater	1
45	DG14-24	Heater Supporter	1

46	DG7-4.4	Heater Fan Motor	1
47	DG13-1014	Drainage Pipe	1
48	DG13-10	Water Drip Tray	1
49	DG19-2	Fan Guard	1
50	DG22-1075	Bottom Plate of Middle Partition	1
51	DG13-1004	Plastic Joint Bar	1
52	DG13-11	Thermistor Supporter	2
53	DG22-1012	Roller	5
54	DG15-1005.1	Bottom Shelf	1
55	DG13-7	Plastic Post	2
56	DG15-1004.1	Wooden Shelves	5
57	DG23-1023	Glass Door	1
58	DG14-1012.1	Right Lower Door Hinge Supporter	1
59	DG14-1014	Door Hinge	1
60	DG14-1013.1	Left Lower Door Hinge Supporter	1
61	DG14-1029	Handle	1